

Barby and Onley Newsletter

December 2024

www.barbvandonleyparishcouncil.co.uk



Barby Advent Calendar 2024



1

2 Kilsby Rd



2

11 Castle Mound



3

22 Kilsby Rd



4

23 Brackendale



5

26 Brackendale Dr



6

10 Brackendale



7

45 Brackendale



8

14 Star Corner



9

33 Daventry Rd



10

52 Daventry Rd



11

48 Daventry Rd



12

4 Castle Mound



13

22 The Green



14

6 Pittoms Lane



15

3 Brackendale



16

68 Daventry Rd



17

3 Holme Way



18

2 Manor Fm Close



19

19 Brackendale Dr



20

18 Almond Close



21

25 Ware Rd



22

35 Holme Way



23

ARNOLD ARMS



24

The Church

Windows should be lit between 6pm and 9pm from their date until the 24th of December

Parish Council News (Parish Clerk 07864 579068)

The Parish Council usually meets on the second Monday of each month except when it falls on a bank holiday. The next meeting will take place on Monday 16th December and January's meeting on Monday 13th, both at 7.30pm at Barby Village Hall.

Members of the parish are welcome to join the meeting and raise any issues they wish during the period of public participation at the beginning of the meeting. Agendas and minutes are published on the parish notice boards and on the website: <https://www.barbyandonleyparishcouncil.co.uk/>

You can contact the Parish Council Clerk, Katrina Jones, at clerk@barbyandonleyparishcouncil.co.uk or by telephone on 07864 579068.

Cost of Living

West Northamptonshire Council have organised a series of cost of living roadshows and pop up events to highlight support available to residents. For more information visit: <https://www.westnorthants.gov.uk/news/cost-living-support-winter>

Fix My Street

Please remember that you can report any highway issues such as potholes to West Northamptonshire Council via <https://www.fixmystreet.com/>

Street Lighting

Please report any issues with street lighting to the Parish Clerk at clerk@barbyandonleyparishcouncil.co.uk and we will arrange for our street light contractor to repair them.

Christmas Recycling

To find out information about West Northants Council services during the Christmas period including bin collection days, Christmas tree collection details, additional recycling arrangements and library opening times please visit the West Northants website:

<https://www.westnorthants.gov.uk/your-council/christmas-west-northamptonshire>

Chairman's Message

Thank you to Mark Taylor & all poppy sellers for the work carried out for Remembrance Sunday - you did the Parish proud.

The Parish Council will assist in liaising with residents of Onley, OPRA & the MOJ during the forthcoming water pipe replacement work scheduled to be carried out in Onley.

We have also contracted a Barby company to cut back the shrubs and trees overhanging the footpath beside the Derry in Barby.

It was a pleasure for Councillors to be able to meet with so many Parishioners at the recent Barby Breakfast Club. We hope to be able to attend forthcoming breakfast clubs and other Parish events so that you can let us know your views & any concerns.

The Parish Council are obtaining some advisory 20mph speed signs that will be placed around the Parish to alert motorists that driving at 30 mph in certain areas may not be appropriate.

The Parish Council budget for the next financial year was agreed at the PC meeting on 11th November, a summary can be found below. The Parish Council precept (the PC income raised as part of the annual council tax) for 2025/2026 will increase by 2%, which is the lowest percentage increase there has been for very many years.

Thank you.

The Councillors would like to join me in wishing all residents of Barby and Onley a Merry Christmas and a Happy New Year.

Faith Gorman, Chairman Barby & Onley Parish council
faith.gorman@bopc.org.uk

Barby & Onley Parish Council Budget for 2025/2026											Total	% Total	Change	Budget
Expenditure Summary	Apr-24	May-24	Jun-24	Jul-24	Aug-24	Sep-24	Actual	Oct - Mar	Total 2024/25	2024/25	Change	Budget 2025/26		
	Act	Act	Act	Act	Act	Act	6 Months	Estimate						
Salary, Office, Audit, Admin, Legal	1,925	1,772	1,790	1,771	2,698	6,022	15,978	14,402	30,380	41%	-1,438	28,942		
Rents	1,486	0	0	0	0	0	1,486	0	1,486	2%	1,000	2,486		
Street Lighting	793	189	179	578	165	167	2,071	3,030	5,101	7%	599	5,700		
Grass Cutting	3,290	1,638	1,485	1,575	1,305	1,280	10,573	2,888	13,461	18%	-1,153	12,308		
Insurance	0	0	0	0	0	1,218	1,218	0	1,218	2%	0	1,218		
Investment Interest	-267	0	-249	0	0	-743	-1,259	1,259	0	0%	0	0		
Play Area, Skate, Sports Field, Tennis	0	800	0	0	0	0	800	2,000	2,800	4%	200	3,000		
Newsletter, Website	324	-171	74	194	50	26	497	1,868	2,365	3%	-30	2,335		
Street Lights Loan Repayment	0	0	0	1,335	0	0	1,335	1,335	2,670	4%	0	2,670		
Environment - Trees, Hedges etc	0	45	0	0	125	0	170	7,500	7,670	10%	830	8,500		
Other	169	60	1,260	-4,480	2,750	100	-141	6,210	6,069	8%	375	6,444		
Total Expenditure in Year	7,720	4,333	4,539	973	7,093	8,070	32,728	40,492	73,220	100%	383	73,603		
Precept Income in Year	-33,016	0	0	0	0	-33,016			-66,032		-1,321	-67,353		

Note: Precept is the Parish Council Income raised as part of the Annual Council Tax

Note	Legal Cost September	4,250
Income less Expenditure		7,188
Items to Adjust overspend		6,251
Onley Grass cutting - Move to Onley account (This is included in above spend)		-6,290
Woodland Trust Grant - reserved last year		-1,200
Interest to be Received (to be assessed)		
Precept Variance Adjusted for Reserves		-302 Favourable

Small forecast overspend/underspend in current year will be managed through reserves

Clubs and Societies

Barby Short Mat Bowls Club Following the retirement of several of our older members from playing, we have a number of vacancies for playing members. This is an invitation to all residents of Barby and Onley to join a thriving club. You are welcome whether you are novice or experienced. We meet every Thursday in Barby Village Hall at 09:15 and play from 09:30 to 11:30 with a refreshment break. Please come and join us.

Evergreen Club – The Evergreen Club, Barby over-sixties club, meets once a fortnight on a Wednesday afternoon 2:00pm to 4:00pm in Barby Village Hall. The group meet to enjoy games of bingo, cards and dominoes, with a cuppa and cake all for £2! Our meetings in December will be on Wednesday 4th and Wednesday 18th. In January the meetings will be 15th and 29th. New Evergreen members are always welcome.

Barby Cricket Club extends a warm invitation to all villagers to pop along and see what the club is all about. Social Membership to the club is available at £10.00 for the season & will allow you to use our Bar Facilities.

For more information go to www.pitchero.com/clubs/barbycricketclub2

Barby Cricket Club – 100 Club draw. The winners of the October 2024 draw were P. Fortnum £80, M. Norton £60 and R. Clewes £40.



Barby Christmas Tree Festival *Sunday 15th December 1pm – 5pm*

All welcome to visit the dazzling display of trees in Barby Church which will be illuminated for all to enjoy. Free entry!

1-3 pm coffee & cakes served

3-5pm mulled wine & mince pies served

Lucky dip raffle

WI – We have had a busy few weeks. 6 members plus our delegate went to the federation AGM. The guest speaker Turi King was the geneticist involved in identifying the remains of King Richard III found in Leicester. 13 members had a very nice lunch at Whilton Locks Garden Village. We had a team in the Village quiz which was good fun. A date to keep clear is Friday February 7th as we are hosting the popular Jigsaw night.

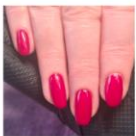
Our next meeting Tuesday 10th December is our Christmas party, members are reminded it starts at 6.00. The WI wish everyone a very Merry Christmas and a Happy 2025.

For our first meeting in 2025, Tuesday 14th January 7.30 Paul Rabbit will tell us some of the history about Municipal parks and Bandstands. Why not make a New Years resolution to come to a WI meeting you will be made very welcome. Want to know more about WI? Give Chris a call on 890963.

Barby Local History Group - We will hold our Christmas Social on Wednesday 11th December at 7.45pm in Barby Village Hall. Please bring a plate of food to share and £2 towards the drinks. Also if members are producing an article for the exhibition please bring it for proofreading by someone else. Our first meeting of 2025 will be a Members Evening on 8th January, same time and venue, to discuss staging the exhibition.

2025 Local History Group Exhibition in Barby Village Hall - The allotments in the centre of Barby are owned by the Townlands Charity. They have been worked by villagers for centuries and were known as *the green gardens*. The buildings surrounding them are now private houses, but in the past they have included shops, factories, a pub and a chapel. Come and see what we have discovered about what is now known as The Green, on the weekend of 15th & 16th February.

The Nail Master



Premium Nail Services

Relaxing home salon 1-2-1 luxury treatments
Natural manicures/pedicures
Gel polish/BIAB/extensions/nail art

Star Corner, Barby Tel: 07590277151

Book online <https://the-nail-master.square.site>

Open 5 days a week (Tues-Sat)



The Nail Master



Ellen_thenailmaster

Barby Village Hall Community Café. The bookswap café will take place on 2nd and 16th December and 6th and 20th January, 2pm to 4pm. Come and have a chat and a cup of tea and pick up a new book or jigsaw.

Barby & Onley Gardening Club – Our **December** meeting is on **Thursday 12th at 7.45pm** when we will hold the AGM and Xmas Social (please note change of day). On January 21st the Gardening Club welcomes Hayley from Plantology who will give us an insight into the creation of a water garden she recently designed. Talks will begin at 7.40pm. Visitors are welcome to both meetings

Breakfast Café in Barby Village Hall Old School Room 9.30 to 11.30. £7 for a full English breakfast with limitless beverages. Vegetarian options available. December 15th in aid of “Harry Pals” a local charity raising money to support the families of children who have suffered strokes prior to birth. There will also be a Christmas Raffle. The January café will take place on January 19th in aid of DACT.

Badminton Barby Village Hall Wednesdays 8pm-10pm. Exercise yes, fun yes, competitive sometimes. As we only have one court, we generally play doubles. No membership, turn up, pay and play. £3 pp. for the night.

Fund-raising for Barby Village Hall Date for your diary: Saturday 15th March Voulez Vous ABBA tribute band. More details in the New Year.



B Beautiful
HAIR & BEAUTY

**B Beautiful established in 2007 is your local salon
for all your hair and beauty treatments!**

Introducing Senior Hair Stylist Vikki Atkins (formerly of Daventry) offering:
Wedding Hair, Restyles, Trims, Hair Colours, Blowdrys, Gents Hair, Childrens Hair

Our *Beauty Services* include:

Massage, Hot Stones, Luxury Facials, Rejuvology Face treatments,
Microblading, Waxing, Gel & Polydip Nails, Pedicures, Ear Piercing

Follow us for special offers and updates! @bbeautifulrugby
Tel. 01788 890889

Visit us at 19 Lower Street, Willoughby, Rugby CV23 8BX
www.bbeautifulrugby.co.uk

Before > After

Art & Craft



**Social Group
for Adults**

Barby Village Hall

**1st and 3rd Thursday evening
of each month...**

**For details about this group
and to book your place...**

**Phone: Elizabeth Anne
Tel: 01788 461840**

There are **LIMITED SPACES** for the A&C Group so...
You need to book a place via the phone number.

Other Notices

Barby Meadow Wood Thanks to all who came to the Halloween event on 2nd November. We had a super number of visitors and hope everyone enjoyed the orienteering trail and toasting marshmallows! Thanks to Barby Townlands for funding the chocolate and marshmallows.

And on to the next festive date - stuck for Christmas gift ideas? Instead of the usual socks and scented candles why not gift sponsoring of a tree or bench? Or simply donate any amount which will help fund wildflower seeds, tools and other equipment. We are a registered charity so can claim back an extra 25% from the government to boost our funds.

As we come to the close of the year, we would like to send our grateful thanks to all our volunteers who have made a huge impact on the development of Barby Meadow Wood. There is plenty of work to do in 2025 as we prepare ground for bluebell planting and wild flower seed sowing. We would also like to thank everyone who has generously donated to the charity throughout the year in sponsoring trees, benches and straight forward cash. The project is going very well but lots more to do to make the wood as inclusive as possible for everyone to enjoy. Wishing you all a peaceful Christmas!

St. Mary's Church, Barby

Soup and a Roll in the Church on Saturday 7th December and on 4th January, 12 noon to 2pm. Homemade soup and a roll, homemade desserts and cream, tea or coffee will be available for £7. All proceeds go to St. Mary's Church.



Thank you to everyone who knitted poppies for display in the Church to commemorate Remembrance Day this year. They made a lovely display in the Church.

Barby Allotments Renewal letters will be sent out shortly. Please promptly complete and return or let me know as quickly as possible if you no longer wish to retain the plot. Once again, to make it a pleasant environment for everyone, please remember to keep your plot weed-free and look after the paths next to your plot. The water leak is finally being investigated by the water authority; we hope they will complete the repair very soon. The contractor is yet to confirm a start date for repairs to the path borders but this is in progress. There are a few allotments available – please contact me if you are interested. Thanks. Jo Tilley 22 Kilsby Road.

Thanks Thank you to the lady who swept all the leaves from the path by the War Memorial; it was most appreciated.

Your Current Parish Councillors

<u>Chairman</u> Faith Gorman	25 Almond Close, Barby	0771 0349 733 faith.gorman@bopc.org.uk
<u>Vice Chairperson</u> Sarah Withington	3 Onley Park, Onley	0752 589 3429 sarah.withington@bopc.org.uk
Adrian Cooper	70 Onley Park, Willoughby	01788 819060 or 0752 760 6823 adrian.cooper@bopc.org.uk
Dawn Cotton	69 Onley Park, Willoughby	01788 815906 dawn.cotton@bopc.org.uk
Nigel Gove	37 Holme Way, Barby	01788 891118 nigel.gove@bopc.org.uk
Thomas Hallam	11 Ware Road, Barby	thomas.hallam@bopc.org.uk
Gareth James	11 Kilsby Road, Barby	gareth.james@bopc.org.uk
Bryan O'Reilly	The Glen, Onley Lane, Barby	07930 607345 brian.oreilly@bopc.org.uk
Jane Pollard	Hopthorne Cottage, 16 Kilsby Road, Barby	07896 262690 jane.pollard@bopc.org.uk
Kirsty Toomey	Danetre House, 2 Rectory Lane, Barby	kirsty.toomey@bopc.org.uk
Phil Wagg	26 Daventry Road, Barby	01788 317508 phil.wagg@bopc.org.uk
<u>Parish Clerk</u> Katrina Jones	77 High Street, Naseby, Northants NN6 6DD	0786 457 9068 clerk@barbyandonleyparishcouncil.co.uk
Police	Tel 101 for non-emergencies, 999 for emergencies craig.edell@northants.pnn.police.uk (0755 777 8055)	
Highway Problems	www.northamptonshire.gov.uk/streetdoctor or call 0300 126 1000	

Pilates at Barby Village Hall

Two classes every Tuesday 9.30 to 10.30 and 10.30 to 11.30.
Pilates is a gentle but effective exercise strengthening the core muscles to support the spine and joints. It also improves flexibility, posture and balance.
Suitable for all ages and abilities. Fully qualified PEA/RSA/Pilates Inst. Instructor.
No joining fee. £6.50 per class. New Members welcome
. For more details phone Mary on 07876 502438

The Gutter Men

Based in Rugby
Local, reliable and honest

Guttering, fascias, soffits & cladding

Repairs, replacements & cleaning

- UPVC or wood full replacement
 - 7 year warranty included
- Gutter repairs come with a free 5 year warranty
- Traditional gutter clearance using ladders; we clear valleys and unblock downpipes

Contact Daniel for a free quotation

Phone: 07776 726680 • 01788 249449

Email: daniel@theguttermen.co.uk

All card payments accepted, or cash or cheque

**Over 250 5 star reviews across
3 review platforms!**



www.theguttermen.co.uk

Barby Post Office & Stores

We would like to thank all our customers for their support over the last year.

We look forward to serving you again in 2025.

We are open from 7.00am to 7.00pm Monday to Saturday, 8.00am to 3.00pm on Sundays. The Post Office is open 9am to 2.30pm Monday to Friday and 9am to 12.30pm on Saturday. During the Festive period, we are open on Christmas Eve (Tuesday) 7.00am to 6.00pm, closed on Christmas Day (Wednesday), open on Boxing Day (Thursday) 8.00am to 5.00pm, New Year's Eve (Tuesday) open 7.00am to 6.00pm, New Year's Day (Wednesday) closed.

Wishing you all a Merry Christmas and a Happy New Year.

From all the staff at Barby Village Stores.

Dates for your Diary

December	2 nd	Community Café – Barby Village Hall 2.00pm to 4.00pm
	4 th	Evergreen Club – Barby Village Hall 2.00pm to 4.00pm
	7 th	Soup and a Roll – St. Mary’s Church 12 noon-2pm
	10 th	WI Christmas Party – Barby Village Hall 6.00pm
	11 th	Local History Group – Barby Village Hall 7.45pm
	12 th	Barby and Onley Gardening Club Christmas social – Barby Village Hall 7.45pm
	15 th	Breakfast Café – Barby Village Hall 9.30am-11.30am
	16 th	Community Café – Barby Village Hall 2.00pm to 4.00pm
	16 th	Parish Council Meeting – Barby Village Hall 7.30pm
	18 th	Evergreen Club – Barby Village Hall 2.00pm to 4.00pm
January	4 th	Soup and a Roll – St. Mary’s Church 12noon-2pm
	6 th	Community Café – Barby Village Hall 2.00pm to 4.00pm
	8 th	Local History Group members evening – Barby Village Hall 7.45pm
	13 th	Parish Council Meeting – Barby Village Hall 7.30pm
	14 th	WI – Barby Village Hall 7.30pm
	15 th	Evergreen Club – Barby Village Hall 2.00pm to 4.00pm
	19 th	Breakfast Café – Barby Village Hall 9.30am-11.30am
	20 th	Community Café – Barby Village Hall 2.00pm to 4.00pm
	21 st	Barby and Onley Gardening Club – Barby Village Hall 7.15pm for 7.40pm start.
	29 th	Evergreen Club – Barby Village Hall 2.00pm to 4.00pm
February	15 th -	Local History Group exhibition – Barby Village Hall.
	16 th	
March	15 th	ABBA tribute band at Barby Village Hall.

Adult Education Courses in Rugby

Fancy trying something new? Look no further than Rugby’s independent Percival Guildhouse which has added a wealth of new courses to its regular adult education offering from January.

Booking is open now for anyone interested in Eat Well, Live Well – a timely post-Christmas-indulgence choice. The six-week-long course starts on 9th January, with another starting in late February.

Also new are courses in Tai Chi, Chair Yoga, Shibori Resist Dyeing and Clay Head Sculpture. For those planning trips to Europe next summer, there are new beginners’ courses in French (4pm start), Italian (morning) and Spanish (both daytime and evening classes). Lastly, a new evening class, Modern Calligraphy for Beginners.

For full details of all courses, start dates and times, please phone 01788 542467 or visit www.percival-guildhouse.co.uk

DOORS & DRAWERS

**THE KITCHEN & BEDROOM REFURBISHMENT SPECIALISTS
WORKTOPS & APPLIANCES SPECIALISTS**

Visit the Website at www.doorsanddrawers.co.uk

Or call Ian on 01788 891289



07974 473917
jasonlittle@outlook.com
www.jasonlittleflooring.co.uk

**CARPETS, WOODEN FLOORING,
LVT, VINYL & LAMINATE.**

Providing the personal touch from start to finish.

We bring the shop to your home or business, providing samples of all aspects of flooring and keeping you safe.



orange

ACCOUNTANCY SERVICES

OUR SERVICES

- ✓ Accounts & Bookkeeping
- ✓ VAT Returns
- ✓ Tax Returns
- ✓ Payroll

"Up-to-date and accurate advice to help you achieve your business's full potential."

CONTACT US

- orangeaccountancyservices.co.uk
- 07914017405
- admin@orangeaccountancyservices.co.uk

Copy for the next issue (February) should be sent to barbyandonleynewsletter@gmail.com by **Sunday 19th January 2025**. Please note, there is no newsletter in January.