

# Barby and Onley Newsletter

## April 2024

[www.barbvandonlevparishcouncil.co.uk](http://www.barbvandonlevparishcouncil.co.uk)



### Camel Racing



Be a camel owner!

Barby Village Hall

Children accompanied by an adult free  
Separate children's door prize  
Primary School Age

Tickets £5.00 per adult  
Includes Supper and adult door prize

### Licensed Bar!

Friday 26th April 2024

Doors Open 7:00 pm  
Racing Starts 7.30 pm



For tickets contact:



Gill Leppard 01788 891091  
Mick Grange 01788 891555



### St Mary's Church, Barby

Revd Alastair Wood, currently incumbent of Studley St. John in the Diocese of Salisbury, has accepted the invitation to become Rector of St. Mary's, Barby with St. Faith's, Kilsby. Revd Wood will be inducted on 4 June 2024 at a venue to be arranged.

### Services in April

All services begin at 10 AM.

April 7<sup>th</sup> Service of Holy Communion with Revd. Kit Jarman

April 14<sup>th</sup> Morning Worship Service open to all faiths. Lay Lead Service

April 21<sup>st</sup> Service of Holy Communion with Revd. Kit Jarman

April 28<sup>th</sup> Special Service at St. Faith's Church, Kilsby (a joint service with St. Mary's Church). Resident of Barby, Revd. Liz Cowley, will be celebrating the 30th anniversary of her ordination at this special service. This is a service with Holy Communion. All are invited to attend.

### Barby Woodland Trust AGM

To be held on Tuesday 23rd April 2024 at 7.00pm in Barby Village Hall.

Supporters, volunteers, local organisations and anyone interested in our work are all invited to attend to hear more about The Barby Woodland Trust, what has been done in its first year as a charity and future plans.

There will be a short meeting to deal with AGM business involving the trustees followed by a report by the chair, Paul Reynolds. There will then be an "open floor" session in which people can ask questions and make suggestions about the project. Visitors are welcome to attend the whole meeting.

## **Parish Council News (Parish Clerk 07864 579068)**

The Parish Council continues to meet on the second Monday of each month except when it falls on a bank holiday. The next meeting will take place on Monday 8<sup>th</sup> April at 7.30pm at Barby Village Hall. Members of the parish are welcome to join the meeting and raise any issues they wish during the period of public participation at the beginning of the meeting. Agendas and minutes are published on the parish notice boards and on the website <https://www.barbyandonleyparishcouncil.co.uk/>

You can contact the Parish Council Clerk, Katrina Jones, at [clerk@barbyandonleyparishcouncil.co.uk](mailto:clerk@barbyandonleyparishcouncil.co.uk) or by telephone on 07864 579068.

### **Annual Parish Meeting – Monday 15<sup>th</sup> April**

The Annual Parish Meeting will be held at Barby Village Hall on Monday 15<sup>th</sup> April at 7.30pm. This is an opportunity for organisations in the parish of Barby and Onley to give a short report on their activities over the past year. All community organisations from Barby and Onley are warmly invited to attend and provide a report. Residents are also very welcome to attend to listen to these reports. Please email the Parish Clerk if you would like to give a report.

**Litter** The Parish Council arranged a litter pick on Saturday 23<sup>rd</sup> March. THANK YOU to all those that helped and thank you to all those residents who continue to pick up after themselves to limit the amount of litter in Barby and Onley.

**Potholes** There has been a noticeable number of potholes across our roads and an increase in the number of enquiries the Parish Council has received relating to potholes. The Parish Council recently arranged a site visit with West Northants Highways, who are responsible for maintaining and repairing the roads, to highlight the potholes in Barby and feedback the concerns of residents. To report a pothole to West Northants Highways please use the Fix My Street website: <https://www.fixmystreet.com/>

**Consultations** There are a number of current consultations being undertaken by West Northants Council on topics such as improving air quality; developing services for children, young people and families; and post-16 transport.

To view current consultations run by West Northants Council please visit the Consultation Hub on the West Northants Council website: <https://westnorthants.citizenspace.com/>

**Planning** The Parish Council is a consultee on planning applications in Barby and Onley and consider new applications at its monthly meetings. Details of the Parish Council's decisions on how they respond to planning applications can be found in

the minutes of the meetings on the Parish Council's website:  
[www.barbyandonleyparishcouncil.co.uk](http://www.barbyandonleyparishcouncil.co.uk)

West Northamptonshire Council is the deciding authority and full details of all planning applications can be found on their website:  
<https://www.westnorthants.gov.uk/planning-and-building-control/view-and-comment-planning-application>

### [Speed Watch in Barby – Saturday 27<sup>th</sup> April to 25<sup>th</sup> May](#)

First what is Speedwatch? It is a scheme that provides the police details of vehicles speeding in areas where speeding is of a concern to the community. The focus is on education, Speedwatch does not lead directly to prosecution. However, by continuing with Speedwatch it ensures the village continues to have visits from the police mobile speed camera car/van on a periodic basis.

If anyone would like to join the Barby Speedwatch team and help to make a difference (or find out more information) then please contact the Speedwatch Coordinator. Sessions are flexible, planned around availability usually lasting for 1-2 hours and can be targeted to match busier times in the morning or late afternoon. We currently have dedicated core team and would welcome new volunteers.

Nigel Gove – Speedwatch Coordinator Barby.  
Email: [nigel.gove@bopc.org.uk](mailto:nigel.gove@bopc.org.uk) Mobile: 07719464433

## **NEIGHBOURHOOD PLAN - THE PARISH COUNCIL NEEDS YOUR OPINION**

As you may know, Barby & Onley Parish Council are in the process of reviewing the Parish's Neighbourhood Development Plan. Neighbourhood Plans represent the opportunity for local people to shape planning policy in their area and help to make sure that planning decisions taken by West Northants Council reflect local issues and not just District-wide concerns. To ensure that the plan meets the requirements & aspirations of local people we would be very pleased to receive your opinion on the new Neighbourhood Plan proposals. Please let us know what you think by completing the below survey by 15<sup>th</sup> April (it will only take a few minutes!)

<http://www.surveymonkey.com/r/barbyandonley>

A direct link to this survey & a copy of the proposed new plan can be found on the Parish website [https://www.barbyandonleyparishcouncil.co.uk/Neighbourhood\\_Plan\\_7061.aspx](https://www.barbyandonleyparishcouncil.co.uk/Neighbourhood_Plan_7061.aspx)

Your opinion on the Parish developments going forward is very important to us. If you need any further information or have any other comments on the Neighbourhood Development Plan please email Faith Gorman, [faith.gorman@bopc.org.uk](mailto:faith.gorman@bopc.org.uk)

# Clubs and Societies

**Badminton** Barby Village Hall Wednesdays 8pm-10pm. Exercise yes, fun yes, competitive sometimes. As we only have one court, we generally play doubles. No membership, turn up, pay and play. £3 pp. for the night.

**Breakfast Café** in Barby Village Hall Old School Room. Have you tried the Full English Breakfast at the Breakfast Café in Barby Village Hall? If not, then join the other villagers there on Sunday 21<sup>st</sup> April 9.30am to 11.30am which this month will raise funds for First Responders. A full English Breakfast is £7.00 per head inc. tea/coffee/orange. Vegetarian options available.

**Cubs and Beavers**. Spaces are now available for boys aged 6-10 years, Thursday nights from 6pm. Please contact Andy on 07834 592123 for more information

**Evergreen Club** – Our meetings in April will be on Wednesday 10<sup>th</sup> and 24<sup>th</sup> in the Old School Room of Barby Village Hall. New Evergreen members are always welcome.

**St Mary's Church** - Soup & Roll at St. Mary's Church, Barby on Saturday 6<sup>th</sup> April and Saturday 4<sup>th</sup> May, 12 noon to 2.00pm. Homemade soup and a roll, homemade desserts and cream, and unlimited tea or coffee will be available for £7. All proceeds go to St. Mary's Church.

**Barby Local History Group** - Our next meeting will be on Wednesday 10<sup>th</sup> April at 7.45pm in Barby Village Hall. Kate Mawer from Braunston will be coming to give her interesting talk on researching the history of her house in the High Street. This is rather appropriate as the Group is looking to research more village properties and would be delighted to see any house deeds that residents have. We have researched a number of houses in the village and are looking to find out about more. You may not be aware, but it is no longer necessary to keep old deeds once the appropriate Land Registry certificate has been issued, thus many of these fascinating and informative documents are in danger of being thrown away and destroyed. Don't let it happen to yours! Please contact Ann Luntley Tel 890760 if you can help us. Thank you.

**Barby Cricket Club** – 100 Club draw. The winners of the February 2024 draw were: C. Tucker £80, R. Tarrant £60 and P. Fortnum £40.

**Barby Village Hall** – Community Café. There will only be one be one bookswap in April, on Monday 15th April.

**Barby Church Trust** (Charity no 277482) - “**Taps & Toilet 100 Club**”. The last draw of the Taps & Toilets took place this morning after six years during which time £23,000 was raised for amenities in the church. Ann & Paul Smith won £85.00 with ball number 94. Barbara Formby won £290.00 with ball number 77.

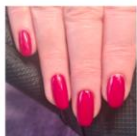
**Barby & Onley Gardening Club** Our April meeting will take place on **Tuesday April 16<sup>th</sup>** when Barby residents Dave Atchison and John Dover will give a talk on "Butterflies & Moths in the Garden". Talk starts at 7.40pm with refreshments from 7.15pm. Visitors are warmly welcome to join us for a £2 donation.

**Gardening Competitions:** It is that time of year again when we run the **Bernard Scott Tallest Sunflower Competition**. This year it is open to both young and old who live in Barby and Onley. There are 3 categories: 1) Primary School age 5-10 yrs; 2) Junior/Secondary age 11-17yrs; 3) Adults 18+. Seeds are free to primary age children; otherwise 20p for 4 seeds. **The Bernard Scott Trophy will be awarded only to those of Primary School age**. Closing Date: 10<sup>th</sup> May 2024. Contact Sue Hives on 01788 890682 or call at 33 Ware Road, Barby.

**Advanced Notice of New Competition:** The Gardening Club is running a **Hang-ing Basket & Wall Basket Competition**. For those who have lived in the village many years you will know that this competition took place before. Anyone, adult or child who lives in Barby or Onley can take part. Cost is £1 per basket. Judging will take place in mid-July. More details will follow next month and judges' criteria will be on the parish website soon. Again, contact Sue Hives on 01788 890682 or call at 33 Ware Road, Barby.

**WI** – Our last meeting was the AGM. Future plans and new ideas were discussed. The new programme can be seen on the notice board in the Village Hall and on our page of the village web site from the 9th of April. Our evening finished with Cheese and Wine. Our next meeting Tuesday April 9th 7.30pm in Barby Village Hall when Susie Lickman will tell us "How to look after our house plants". Members are reminded the annual subs are due. If you would like more WI information give me a call on 890963.

*The Nail Master*



### Premium Nail Services

Relaxing home salon 1-2-1 luxury treatments  
Natural manicures/pedicures  
Gel polish/BIAB/extensions/nail art

Star Corner, Barby Tel: 07590277151

Book online <https://the-nail-master.square.site>

Open 5 days a week (Tues-Sat)



The Nail Master



Ellen\_thenailmaster

## Other Notices

**Congratulations!** Congratulations to Ian and Pat Webb who celebrate their Golden Wedding anniversary (50 years) on April 6th. A date that ex-accountant Ian finds easy to remember as the start of the tax year!

## **Barby Village Hall on the TV!**

Mollie King radio 1 presenter, popstar (The Saturdays) and Strictly competitor did a sponsored cycle from London to Hull (311 miles) for Comic Relief Monday to Friday 11<sup>th</sup>-15<sup>th</sup> March. She stopped off at Barby Village Hall on Tuesday morning for a break for her and the filming and radio crews. She was on BBC "Morning Live" broadcasting from outside the village hall. It was a busy morning for the three of us providing refreshments for her and the support crew of about 30 and the weather didn't help. She was already aching and exhausted and had quite a way still to go (Burton on Trent) after leaving us. She made it to Hull on Friday and raised over £1million for Comic Relief. Well done Mollie and many thanks to the team at the Village Hall for their support.



**Barby Cricket Club** extends a warm invitation to all villagers to pop along and see what the club is all about. Social Membership to the club is available at £10.00 for the season & will allow you to use our Bar Facilities.

For more information go to [www.pitchero.com/clubs/barbycricketclub2](http://www.pitchero.com/clubs/barbycricketclub2)

Friday 5th April - Sign on Night (come and enjoy a drink with us) 6.30pm

Saturday 6th April - Ambleside (Friendly) 1pm

Sunday 7th April - Fillongley (Friendly) 1pm

Saturday 13th April - Corley (Friendly) 1pm

Monday 15th April - Oakfield (Ladies XI) 7pm

Friday 19th April - First Junior Practice Evening 6.15pm

Saturday 20th April - Southam (Friendly) 1pm

Saturday 20th April - Karaoke night & Laffs Pizza Van 7pm

Sunday 21st April - Marton (Friendly) 1pm

Saturday 27th April - Horton House (1st XI League) 11am

**Used Postage Stamps** – Thanks to all those who have dropped off their used stamps. If you have any more just put them in my post box (on the side of my house) at 41 Holme Way. They will be sent to various charities. Janice Jones.

## **Pilates at Barby Village Hall**

Two classes every Tuesday 9.30 to 10.30 and 10.30 to 11.30.

Pilates is a gentle but effective exercise strengthening the core muscles to support the spine and joints. It also improves flexibility, posture and balance.

Suitable for all ages and abilities. Fully qualified PEA/RSA/Pilates Inst. Instructor.

No joining fee. £6.50 per class. New Members welcome

. For more details phone Mary on 07876 502438

## Your Current Parish Councillors

<b><u>Chairman</u></b> <b>Paul Reynolds</b>	Lilac Cottage, Daventry Rd, Barby	07815 551202 <a href="mailto:paul.reynolds@bopc.org.uk">paul.reynolds@bopc.org.uk</a>
<b><u>Vice Chairperson</u></b> <b>Steven Gee</b>	41 Daventry Road, Barby	07969 992557 <a href="mailto:steven.gee@bopc.org.uk">steven.gee@bopc.org.uk</a>
<b>Adrian Cooper</b>	70 Onley Park, Willoughby	01788 819060 or 0752 760 6823 <a href="mailto:adrian.cooper@bopc.org.uk">adrian.cooper@bopc.org.uk</a>
<b>Dawn Cotton</b>	69 Onley Park, Willoughby	01788 815906 <a href="mailto:dawn.cotton@bopc.org.uk">dawn.cotton@bopc.org.uk</a>
<b>Faith Gorman</b>	25 Almond Close, Barby	0771 0349 733 <a href="mailto:faith.gorman@bopc.org.uk">faith.gorman@bopc.org.uk</a>
<b>Gareth James</b>	11 Kilsby Road, Barby	<a href="mailto:gareth.james@bopc.org.uk">gareth.james@bopc.org.uk</a>
<b>Nigel Gove</b>	37 Holme Way, Barby	01788 891118 <a href="mailto:nigel.gove@bopc.org.uk">nigel.gove@bopc.org.uk</a>
<b>Bryan O'Reilly</b>	The Glen, Onley Lane, Barby	01788 899065 <a href="mailto:brian.oreilly@bopc.org.uk">brian.oreilly@bopc.org.uk</a>
<b>Jane Pollard</b>	Hopthorne Cottage, 16 Kilsby Road, Barby	07896 262690 <a href="mailto:jane.pollard@bopc.org.uk">jane.pollard@bopc.org.uk</a>
<b>Phil Wagg</b>	26 Daventry Road, Barby	01788 317508 <a href="mailto:phil.wagg@bopc.org.uk">phil.wagg@bopc.org.uk</a>
<b>Sarah Withington</b>	3 Onley Park, Onley,	0752 589 3429 <a href="mailto:sarah.withington@bopc.org.uk">sarah.withington@bopc.org.uk</a>
<b><u>Parish Clerk</u></b> Katrina Jones	77 High Street, Naseby, Northants NN6 6DD	0786 457 9068 <a href="mailto:clerk@barbyandonleyparishcouncil.co.uk">clerk@barbyandonleyparishcouncil.co.uk</a>
<b>Police</b>	Tel 101 for non-emergencies, 999 for emergencies <a href="mailto:craig.egdell@northants.pnn.police.uk">craig.egdell@northants.pnn.police.uk</a> (0755 777 8055)	
<b>Highway Problems</b>	<a href="http://www.northamptonshire.gov.uk/streetdoctor">www.northamptonshire.gov.uk/streetdoctor</a> or call 0300 126 1000	

## Dates for your Diary

<b>April</b>	6 <sup>th</sup>	Soup & A Roll – St. Mary's Church 12.00noon to 2.00pm
	8 <sup>th</sup>	Parish Council Meeting – Barby Village Hall 7.30pm
	9 <sup>th</sup>	WI – Barby Village Hall 7.30pm
	10 <sup>th</sup>	Evergreen Club - Barby Village Hall – 2.00pm to 4.00pm
	10 <sup>th</sup>	Local History Group – Barby Village Hall 7.45pm
	15 <sup>th</sup>	Community Café – Barby Village Hall 2.00pm to 4.00pm
	15 <sup>th</sup>	Annual Parish Meeting - Barby Village Hall 7.30pm
	16 <sup>th</sup>	Gardening Club – Barby Village Hall – 7.15pm
	18 <sup>th</sup>	Police Beat Bus outside the Arnold Arms 2.30pm-3.30pm
	21 <sup>st</sup>	Breakfast Café – Barby Village Hall – 9.30am to 11.30am
	23 <sup>rd</sup>	Barby Woodland Trust AGM – Barby Village Hall 7.00pm
	24 <sup>th</sup>	Evergreen Club – Barby Village Hall 2.00pm to 4.00pm
	26 <sup>th</sup>	Camel Racing at Barby Village Hall 7.00pm for 7.30 start

# DOORS & DRAWERS

**THE KITCHEN & BEDROOM REFURBISHMENT SPECIALISTS  
WORKTOPS & APPLIANCES SPECIALISTS**

Visit the Website at [www.doorsanddrawers.co.uk](http://www.doorsanddrawers.co.uk)

Or call Ian on 01788 891289

15 years in business providing Unisex Hair and Beauty treatments in our relaxed, friendly salon where a warm welcome awaits you!



Now offering Microblading (natural looking semi-permanent eyebrows) ideal for filling in sparse, thin brows – please ask for a free consultation!

Try our best-selling Luxury Hour, a back massage and facial treatment using our massage expertise and aromatherapy oils to ease tired muscles and indulge your senses

Hair - Massage – Nails – Facials – Waxing - Ear piercing - Pedicures - Microblading

[www.bbeautifulrugby.co.uk](http://www.bbeautifulrugby.co.uk) call 01788 890889 19 Lower Street, Willoughby, Rugby, CV23 8BX



**jasonlittle**  
carpet & flooring ltd

07974 473917  
[jasonlittle@outlook.com](mailto:jasonlittle@outlook.com)  
[www.jasonlittleflooring.co.uk](http://www.jasonlittleflooring.co.uk)

**CARPETS, WOODEN FLOORING,  
LVT, VINYL & LAMINATE.**

Providing the personal touch from start to finish.

We bring the shop to your home or business, providing samples of all aspects of flooring and keeping you safe.



**FREE QUOTATIONS**

Copy for the next issue (May) should be sent to  
[barbyandonleynewsletter@gmail.com](mailto:barbyandonleynewsletter@gmail.com) by **Sunday 21<sup>st</sup> April 2024.**